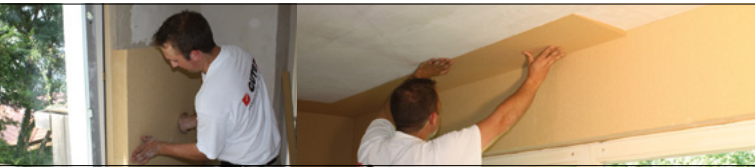






# GUTEX® Flankendämmkeil Data Sheet



Photographic images are property of GUTEX archive

GUTEX Flankendämmkeil, a corner insulation wedge, significantly eases the work of painters, plasterers and interior decorators. Like nearly all of GUTEX's single-ply homogeneous insulation boards, it installs easily with GUTEX Klebe- und Spachtelputz, an adhesive mortar.

Technical Data	Corner Insulation Wedge
Joint Type	Butt
Thickness (mm)	Tapered 30 mm to 5 mm
Length x width (mm)	1250 x 300 mm
Square metres per sheet (m <sup>2</sup> )	0.375
Weight per sheet (kg)	0.85
Boards per pallet	8
Square metres per pack (m <sup>2</sup> )	3
Weight per pack (kg)	8
Density (kg/m <sup>3</sup> )	130
Nominal thermal conductivity $\lambda_D$ (W/mK)	0.039
Thermal conductivity $\lambda$ (W/mK)	0.041
Vapour diffusion factor ( $\mu$ )	3
Compressive stress/ strength (kPa)	50
Tensile strength perpendicular to board surface (kPa)	10
Air flow resistivity (kPa s/m <sup>2</sup> )	100
Specific heat capacity (J/kgK)	2100
Fire reaction Euro Class as per DIN EN 13501-1	E

## Applications

- For added insulation of particularly critical interior locations, such as the joints between walls and ceilings.

## Advantages

- Quick and easy installation
- Visually unnoticeable wall-ceiling joint insulation
- Easy to coat with plaster

## Installation - General

- Always store the boards in a dry place and install only if dry.
- Substrate must be suitable for adhesive.
- Cut with circular hand saw, jigsaw or table saw.

## Installation

- Make sure the substrate is sound, free of dust and suitable for adhesion. If necessary, apply a primer, e.g. Sto Prim Plex or comparable product.
- Apply GUTEX Klebe- und Spachtelputz (anchoring and filling compound) to the GUTEX Flankendämmkeil surface uniformly, covering it completely. Use an 8 mm serrated trowel to apply a 5 mm thick coat of the adhesive to the Flankendämmkeil.
- Apply mineral plaster or clay plaster to the GUTEX Flankendämmkeil.

## Composition

- Manufactured from untreated Black Forest spruce and fir
- 4% polyurethane resin (binder)

For further information, please refer to the "Interior Insulation of Exterior Walls" brochure.

All rights reserved. Henselmann GmbH + Co KG is not liable for any damage resulting from error or misprinting. The technical data provided herein is subject to change. Although all of the information was current at the time of its publication, the publication of superseding information renders the old information invalid.

The suitability of this product for applications not specified in this data sheet is not guaranteed. Warranty and liability claims are subject to the terms of GUTEX's General Terms of Business.

## Installation



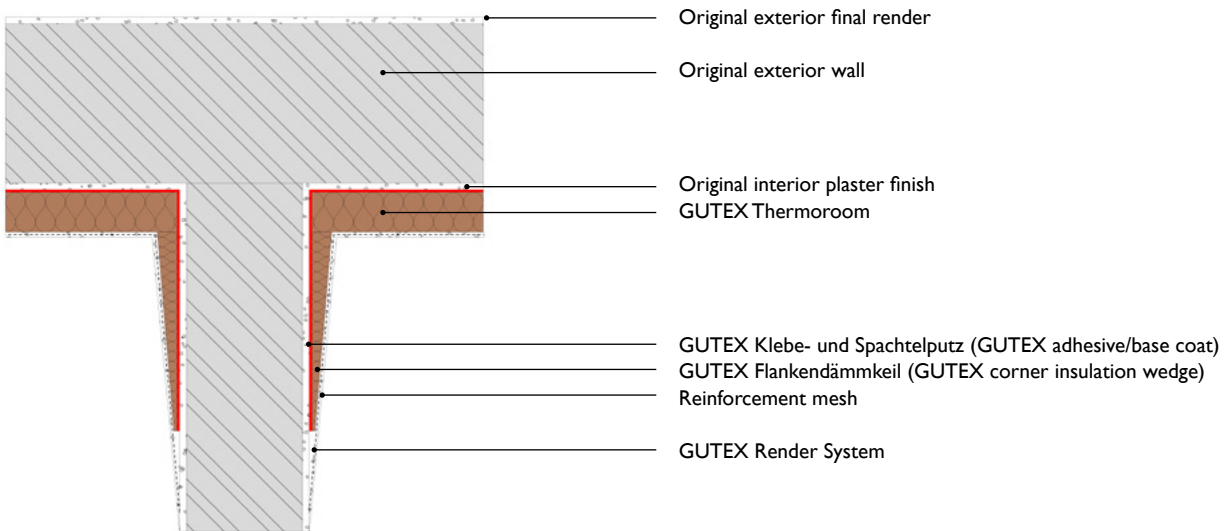
When gluing the Flankendämmkeil in place, make sure it has full surface contact to wall and ceiling surfaces.



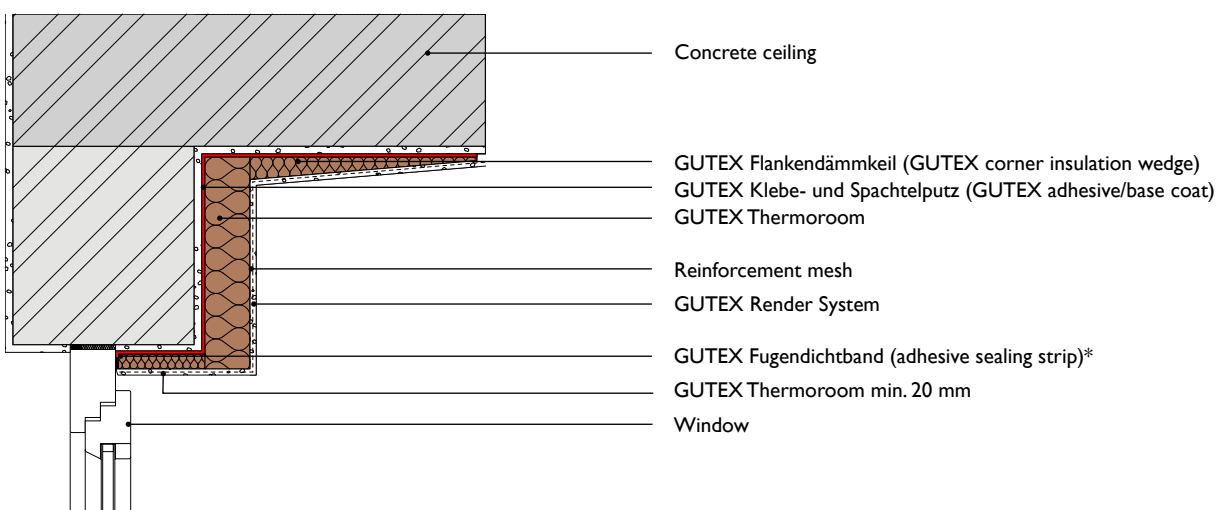
Plastering corner insulation wedge/wall.

## Detail Drawings

### Exterior Wall - Interior Wall



### Exterior Wall - Concrete Floor



NATURALLY MADE FROM WOOD