



Photographic images are property of GUTEX archive

**GUTEX Thermoinstal**, a compression resistant insulation board with single-ply construction and homogenous cross section, is ideal for the thermal insulation of service cavities, electrical and plumbing lines.

| Technical Data   | Thermoinstal |
|--|--------------|
| Joint type   | Butted       |
| Thickness (mm)   | 50           |
| Length x width (mm)  | 1250 x 600   |
| Square metres per sheet (m <sup>2</sup> )                      | 0.75         |
| Weight per sheet (kg)  | 5.6          |
| Weight per m <sup>2</sup> (kg)                                 | 7.5          |
| Boards per pallet  | 84           |
| Square metres per pallet (m <sup>2</sup> )                     | 63           |
| Weight per pallet (kg)   | 500          |
| Bulk density (kg/m <sup>3</sup> )                              | 150          |
| Vapour diffusion factor (μ)                                    | 3            |
| sd-value (m)   | 0.15         |
| Compressive stress/ strength (kPa)                             | 100          |
| Tensile strength perpendicular to board surface (kPa)          | 10           |
| Air flow resistivity (kPa s/m <sup>2</sup> )                   | 100          |
| Specific heat capacity (J/kgK)                                 | 2100         |
| Fire reaction Euro Class as per DIN EN 13501-1                 | E            |
| European Union   |              |
| Nominal thermal conductivity λ <sub>D</sub> (W/mK)             | 0.040        |
| Nominal thermal resistance R <sub>D</sub> (m <sup>2</sup> K/W) | 1.25         |



Designation: WF-EN13171-T4-CS(10/Y)100-TR10-MU3-AF100

German disposal category: A2 (treated wood; without non-halogenated organic compounds); code number as per AVV:030105; 170201

## Composition

- Manufactured from untreated Black Forest spruce and fir
- Additive: 4 % polyurethane resin (binder)

## Applications

- To create a continuous thermal insulation layer for service cavities, plumbing and electrical lines
- Insulation of timber frame and prefab modular house sections

## Advantages

- Optimum thermal insulation
- Superior thermal storage capacity provides outstanding insulation against heat in the summer and cold in winter.
- Improves acoustic insulation
- Regulates humidity and is vapour diffusion permeable
- Significantly reduces thermal bridging
- Compression resistant
- Wood is a sustainable, recyclable natural resource.
- Made in Germany
- Biologically safe (natureplus® certified)

## Installation

- Store and install this product dry.
- Avoid cross joints.
- For best cutting results, use a GUTEX blades for jigsaws or handheld circular saws and a vacuum fitting.
- Substrate must be dry, even and technically sound.
- Protect this product against moisture (note building moisture!).
- Vacuum off the dust in accordance with applicable workplace safety regulations or practices.
- fixation on stable woodpanel  $\geq 15$  mm

## Installation Detail



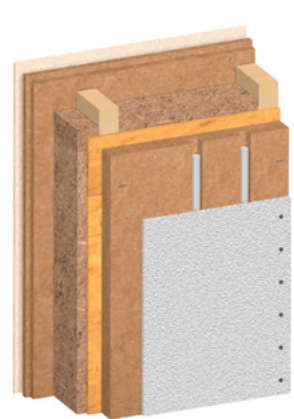
**Step 1:**  
Install GUTEX Thermo-  
instal, with full uninter-  
rupted surface contact to  
the substrate, using staples,  
screws or nails.



**Step 2:**  
Cut the slots for the lines  
in the GUTEX Thermo-  
instal board with an  
appropriate wood cutting  
tool.



**Step 3:**  
Install the plumbing or  
electrical lines, fastening  
them securely.



**Step 4:**  
Completely cover with wall  
board (at least 12.5 mm),  
fastening it securely to the  
substrate with gypsum board  
screws (75 mm), etc. Install  
the screws 150 mm apart  
along the timber studs and  
62.5 cm on-centre.

## Suggested Constructions



- Plasterboard (at least 12.5 mm)
- **GUTEX Thermoinstal**  
50 mm
- OSB board (air barrier)  $\geq 15$  mm
- GUTEX Thermoflex between  
timber studs/uprights
- **GUTEX Multitherm/  
GUTEX Multiplex-top/  
GUTEX Ultratherm**
- Cross battens
- Battens
- Timber cladding (vertical)



- Plasterboard (at least 12.5 mm)
- **GUTEX Thermoinstal**  
50 mm
- OSB board (air barrier)  $\geq 15$  mm
- GUTEX Thermoflex between  
timber studs/uprights
- **GUTEX Thermowall/-gf**
- **GUTEX Stucco/Render  
System**

All rights reserved. Henselmann GmbH + Co KG is not liable for any damage resulting from error or misprinting. The technical data provided herein is subject to change. Although all of the information was current at the time of its publication, the publication of superseding

information renders the old information invalid.

The suitability of this product for applications not specified in this data sheet is not guaranteed. Warranty and liability claims are subject to the terms of GUTEX's General Terms of Business.



NATURALLY MADE FROM WOOD