



Photographic images are property of GUTEX archive

**GUTEX Thermosafe** is a universal multiply insulating board with outstanding properties for protection against the heat in summer and the loss of heat in winter.

Technical Data	Thermosafe
Joint type	Butted
Thickness (mm)	40/60/80/100/120
Length x width (mm)	1200 x 625
Square metres per board (m <sup>2</sup> )	0.75
Weight per board (kg)	4.8/7.2/9.6/12.0/14.4
Weight per m <sup>2</sup> (kg)	6.4/9.6/12.8/16.0/19.2
Boards per pallet	100/66/50/40/36
Square metres per pallet (m <sup>2</sup> )	75.0/49.5/37.5/30.0/27
Bulk density (kg/m <sup>3</sup> )	160
Weight per pallet (kg)	550 (40mm)/ 500 (60-100mm)
Vapour diffusion factor (μ)	5
sd-value (m)	0.1/0.2/0.3/0.4/0.5/0.6
Compressive stress/ strength (kPa)	50
Air flow resistivity (kPa s/m <sup>2</sup> )	100
Specific heat capacity (J/kgK)	2100
Fire reaction Euro Class as per DIN EN 13501-1	E
European Union	
Nominal thermal conductivity λ <sub>D</sub> (W/mK)	0.038
Nominal thermal resistance R <sub>D</sub> (m <sup>2</sup> K/W)	1.05/1.55/2.10/2.60/3.15



WF-EN13171-T4-CS(10/Y)50-MU5-AF100.

German disposal category: A2 (treated wood; without non-halogenated organic compounds); code number as per AVV:030105; 170201

## Composition

- Manufactured from untreated Black Forest spruce and fir
- 4 % white glue is used for the lamination of multiple plies in boards thicker than 20 mm.

## Applications

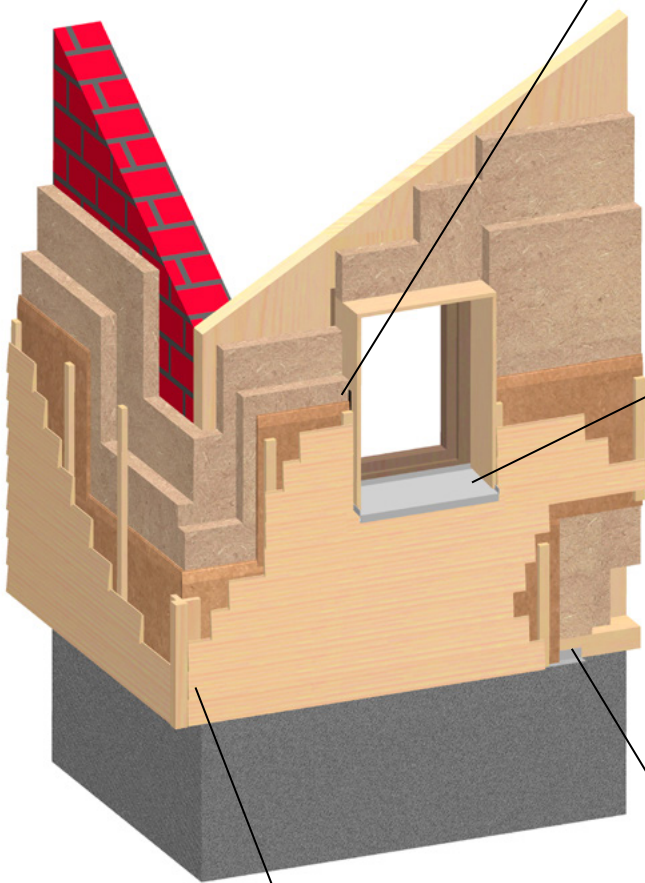
- Above rafter insulation
- Between rafter insulation
- Interior insulation of ceilings, walls, floors or roofs
- Insulation of wood frame and prefab modular house sections
- Insulation of solid wood walls and masonry walls (vented facades)
- Lightweight partition walls

## Advantages

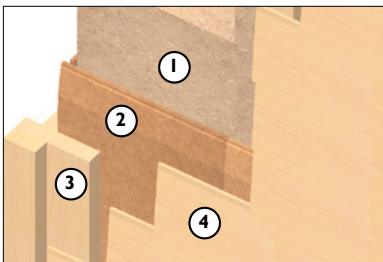
- Optimum thermal insulation
- Superior thermal storage capacity provides outstanding insulation against heat in summer and cold in winter.
- Improves acoustic insulation
- Regulates humidity
- Water vapour diffusion permeable
- Quick and easy installation
- Wood is a sustainable, recyclable natural resource
- Made in Germany
- Biologically safe (natureplus® certified)

## Installation

- Store and install this product dry.
- Offset the joints if installing multiple layers.
- Install with full surface contact to substrate avoid cross joints.
- Do not exceed board thickness of 60 mm under wet screed. For further floor constructions, see GUTEX Thermosafe-wd and GUTEX Thermofloor.
- For best cutting results, use GUTEX blades for jigsaws or circular saws and a vacuum fitting.
- Vacuum off the dust in accordance with applicable workplace safety regulations or practices.
- Fasten the board after placing it in position and immediately cover it for protection (depending on application with e.g. GUTEX Multiplex-top or Thermowall).



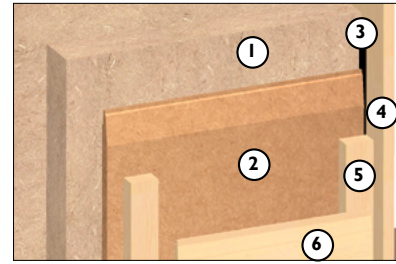
### Corner/Wall



- ① GUTEX Thermosafe-homogen  
GUTEX Multiplex-top/GUTEX Ultratherm/ GUTEX Multitherm
- ② GUTEX Multitherm
- ③ Corner bead
- ④ Timber cladding

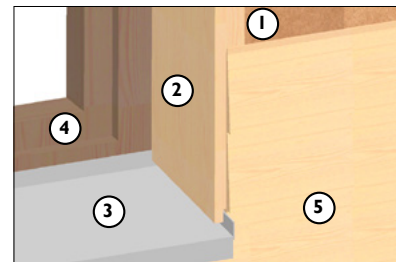
## Vented Facade Detail

### Reveal



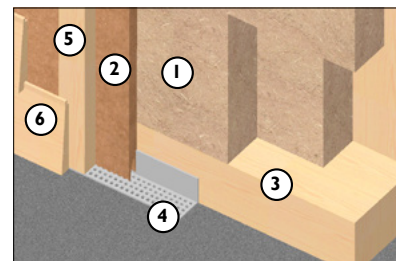
- ① GUTEX Thermosafe-homogen
- ② GUTEX Multiplex-top/GUTEX Ultratherm/ GUTEX Multitherm
- ③ Sealing strip
- ④ Window jamb
- ⑤ Cross battens/ Venting
- ⑥ Timber cladding

### Window Sill



- ① GUTEX Multiplex-top/GUTEX Ultratherm/ GUTEX Multitherm
- ② Window jamb
- ③ Window sill
- ④ Window frame
- ⑤ Timber cladding

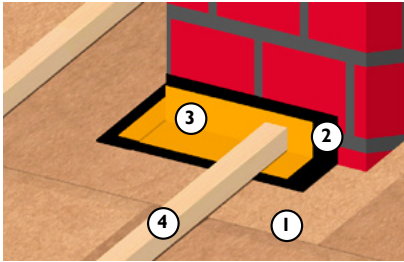
### Foundation/Wall



- ① GUTEX Thermosafe
- ② GUTEX Multiplex-top/GUTEX Ultratherm/ GUTEX Multitherm
- ③ Plate
- ④ Air grate
- ⑤ Cross battens/ Venting
- ⑥ Timber cladding

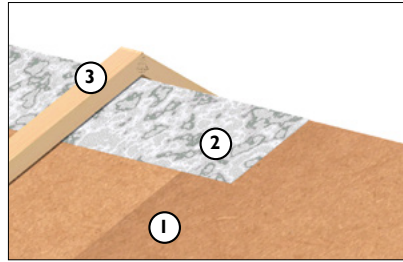
# Above Rafter Insulation Detail

## Roof Interruptions



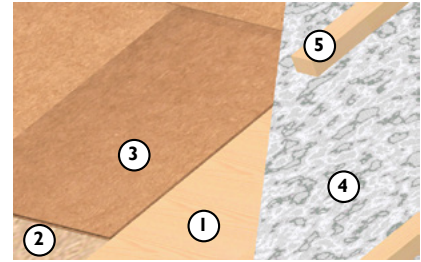
- ① GUTEX Multiplex-top/  
GUTEX Ultratherm
- ② GUTEX Primer
- ③ GUTEX Joint Tape
- ④ Cross battens

## Ridges

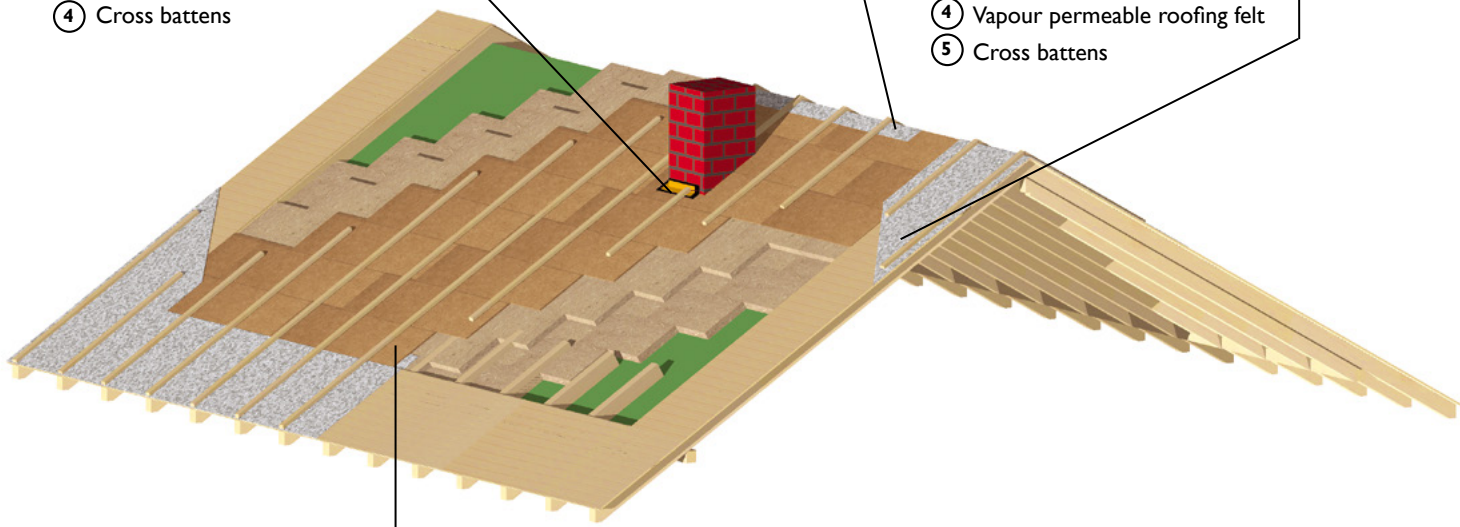


- ① GUTEX Multiplex-top/  
GUTEX Ultratherm
- ② Vapour permeable roofing felt
- ③ Cross battens

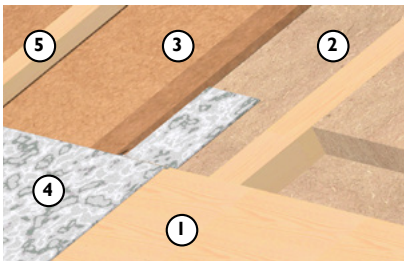
## Gable Ends



- ① Sheathing of exterior overhang
- ② GUTEX Thermosafe
- ③ GUTEX Multiplex-top/  
GUTEX Ultratherm
- ④ Vapour permeable roofing felt
- ⑤ Cross battens

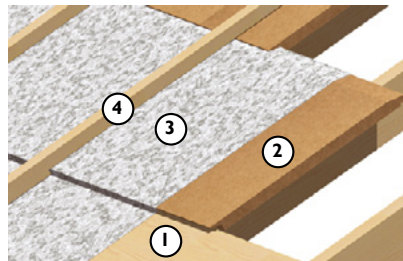


## Eaves Variation 1



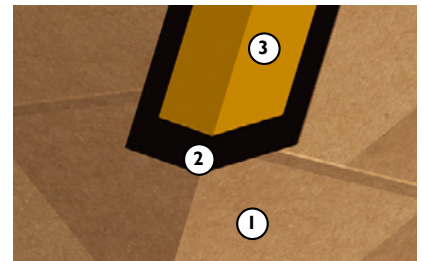
- ① Sheathing of exterior overhang
- ② GUTEX Thermosafe
- ③ GUTEX Ultratherm/  
GUTEX Multiplex-top
- ④ Vapour permeable roofing felt
- ⑤ Cross battens

## Eaves Variation 2



- ① Sheathing of exterior overhang
- ② GUTEX Ultratherm/  
GUTEX Multiplex-top
- ③ Vapour permeable roofing felt
- ④ Cross battens

## Valleys



- ① GUTEX Ultratherm/GUTEX Multiplex-top
- ② GUTEX Primer
- ③ GUTEX Joint Tape

All rights reserved. Henselmann GmbH + Co KG is not liable for any damage resulting from error or misprinting. The technical data provided herein is subject to change. Although all of the information was current at the time of its publication, the publication of superseding

information renders the old information invalid.

The suitability of this product for applications not specified in this data sheet is not guaranteed.

Warranty and liability claims are subject to the terms of GUTEX's General Terms of Business.



NATURALLY MADE FROM WOOD